

Electrolux Professional
Ironers



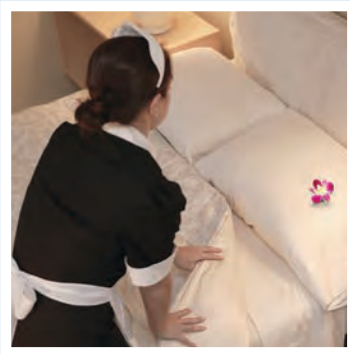
Thinking of you
Electrolux



Excellence

Nothing short of perfect

When perfect flatwork ironing is a must, you can rely on the wide range of Electrolux products to meet your needs.



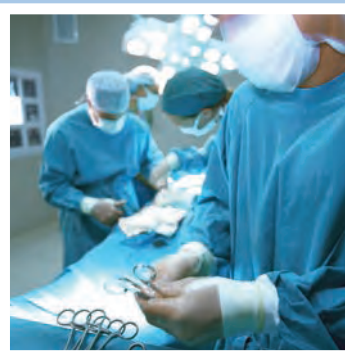
Hotels and restaurants

Your customers expect exquisite, crisp sheets and perfectly pressed table linen. Ensuring your customer's comfort, in every little detail, is your guarantee of business success. But at what cost? The Electrolux range of ironers provides the ergonomics and large choice of options to make this possible, whilst at the same time increasing your profitability. Electrolux ironers provide the perfect complement to your business quality, profitability and growth.



Professional laundry

It's simple. Electrolux ironers provide you with increased productivity, absolute reliability and the results both you and your customers are looking for.



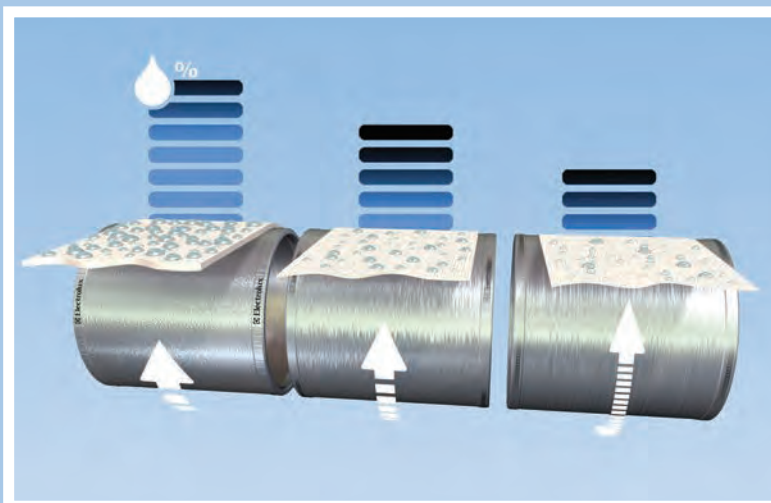
Medical centres

Optimum hygiene, safety and cost-efficiency are just a few of the reasons why Electrolux is the most reliable partner for all healthcare institutions.

A close-up photograph of a woman with blonde hair, wearing a white lab coat over a blue shirt, examining a green plant in a red pot. She is in a greenhouse, with the structure visible in the background. The word "Moisture" is overlaid on the image.

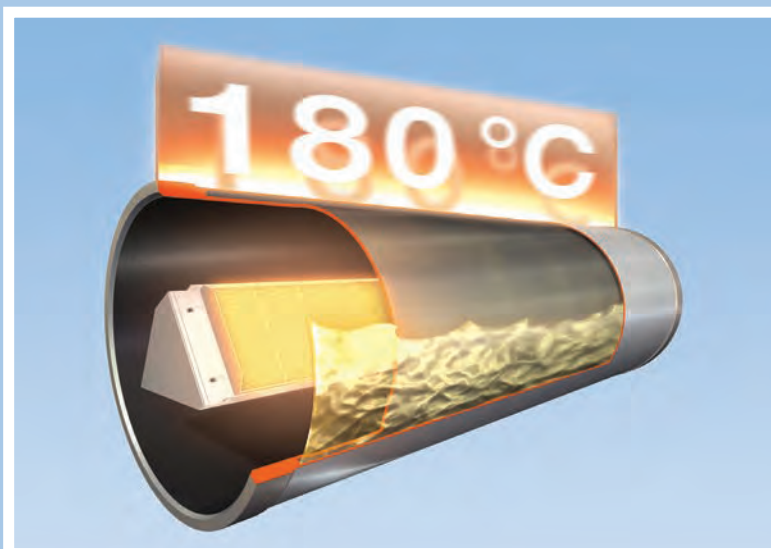
Moisture

Electrolux creates the first “Plug and Play” ironer on the market and finally makes flatwork ironing accessible to everyone.



Direct Ironer Advanced Moisture Management System (DIAMMS™)

Electrolux brings the first true moisture management system to the market. With this unique feature, you can enjoy the automatic control of your ironer's speed. Your ironer is never too slow or too fast - guaranteeing you the optimum productivity. What's more, your linen is always dried to perfection.



Dubixium™

With the unique “Dubixium™” cylinder, you will never again experience loss of production due to the sides of your ironer overheating. By means of a patented thermal oil flow inside the cylinder, heat is always evenly distributed through the length of your ironer. With the Electrolux “Dubixium™”, you will experience the comfort of steam, without steam guaranteeing your business maximum profitability.



The safest way

User-friendly controls for a perfect result

Electrolux ironers ensure every step of the ironing process is made simple for you.



Electronic control panel

Electronic control

The electronic controls with their large display panel, intuitively guide the operator step by step, displaying all necessary information for the machine's adjustments and use. What's more, an indicator light informs the operator if retained humidity in the linen after ironing exceeds 8%. This ensures optimum dryness and hygiene, in compliance with RABC* quality controls. The control panels can also be networked via CMIS** - to track/record every step in the drying and ironing process.

*RABC: Risk Analysis and Bio-Contamination Control

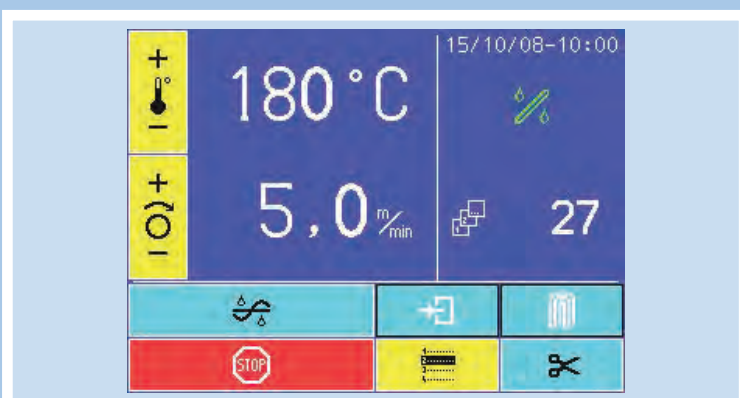
**CMIS: Certus Management Information System™



Electro-mechanical control panel

Electro-mechanical control

The electro-mechanical control is easy to read and simple to set. Both the ironing temperature and speed can be adjusted at any point. Now with our frequency



Touch screen

Touch screen

The touch screen control on FFS models is the optimum interface to run an ironer. It features several levels where your operators will enjoy a simple text free and easy to use running screen, while your technicians will have access to exhaustive technical pages for accessing statistics and customisation of your ironer. Furthermore, this interactive control will minimise the training requirements of your operators while optimising your production by informing your operators of any event on the machine.

The best technology makes all the difference

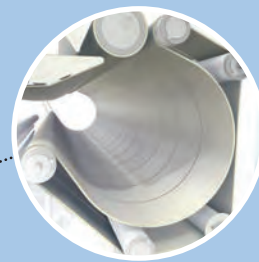
At Electrolux, safety and ergonomics are paramount to make flatwork



A fully encased machine guarantees maximum workplace safety, and maximum productivity



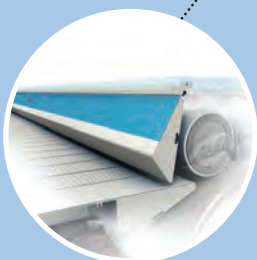
A heavy padded pressure roll guarantees best ironing quality



Nomex ironing belts withstand temperatures of over 200°C giving you improved quality and prolonging the life of your machine



Fully ducted exhausts mean a safe and healthy work place as well as greater performance



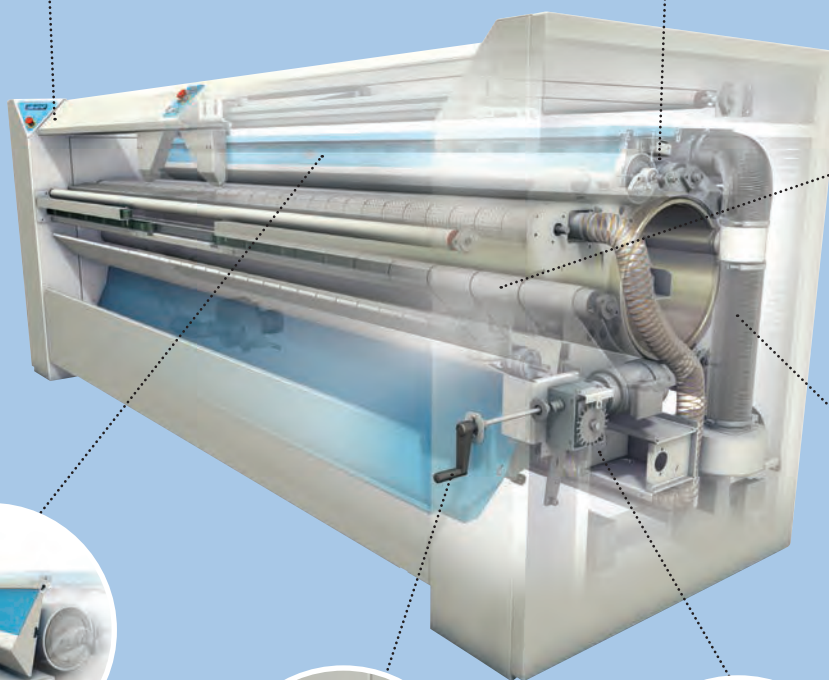
Finger protection ensures operators' safety



A safety handle for use in the event of power failure ensures protection of your linen, your machine and your operators



A frequency-controlled motor optimises speed and productivity

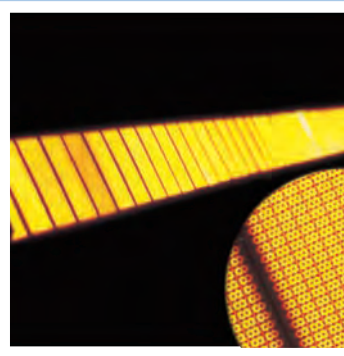


Tailored to your needs

All accessories are designed to guarantee the machine will meet your



Feeding Folding Stacking (FFS)



Energy Efficient Heating

Feeding Folding Stacking (FFS)

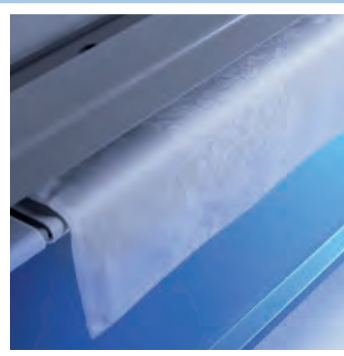
One compact machine that can process your flatwork with one operator only. Feeding, drying, ironing, folding and stacking are all performed automatically. Imagine the savings you make on labour!

Energy Efficient Heating

You can choose among the widest range in heating options and, thanks to the Dubixium™ technology, you can even combine some to obtain the greatest energy efficiency (e.g. electric or gas and thermal oil). Our unique ceramic gas burner, generating infrared heating, allows greatest energy savings and the lowest maintenance on the market while providing a safer and healthier workplace.



Automatic Feeding



Automatic Folding

Automatic Feeding

The most compact, silent and ergonomic automatic feeder on the market. You can finish your largest items with one operator only, giving a greater productivity for your business.

Automatic Folding

Fully automatic, highly versatile, compact and completely integrated are just a few characteristics to describe the Electrolux folders. No manual setting is required as the device automatically measures each item to consistently perform a perfect fold. Here again, you'll enjoy great savings on labour.



Electrolux Service

- Maintain equipment in prime condition
- Prevent costly and untimely break-downs
- Reduce stress and unexpected problems
- Retain the value of your investment for many years to come
- Reduce overall operating costs
- Fully qualified and trained Electrolux certified engineers

Legend

- Standard
- Option at extra cost
- Not available



Bed-type ironer Standard product		IB42310	IB42314	IB42316
Roll diameter mm		230	230	230
Ironing width mm		1000	1400	1650
Ironing speed m/min		1 to 4	1 to 4	1 to 4
Roll diameter (in)		9-1/16"	9-1/16"	9-1/16"
Ironing width (in)		39-6/16"	55-2/16"	64-15/16"
Ironing speed (ft/min)		3' to 13'	3' to 13'	3' to 13'
Dimensions	Width mm	1395	1795	2045
	Depth mm	510	510	510
	Height mm	1025	1025	1025
	Width (in)	54-15/16"	70-11/16"	80-8/16"
	Depth (in)	20-1/16"	20-1/16"	20-1/16"
	Height (in)	40-6/16"	40-6/16"	40-6/16"
Heating alternatives				
Electric		●	●	●



Cylinder-type ironer Standard products		IC43316	IC43320	IC44819	
Dimensions	Roll diameter mm (in)	325 (12-13/16")	325 (12-13/16")	479 (18-14/16")	
	Ironing width mm (in)	1650 (64-15/16")	2065 (81-5/16")	1910 (75-3/16")	
	Width mm (in)	2030 (79-15/16")	2445 (96-4/16")	2575 (26-12/16")	
	Depth mm (in)	690 (27-3/16")	680 (26-12/16")	1070 (40-6/16")	
	Height mm (in)	1145 (45-1/16")	1145 (26-12/16")	1270 (50)	
Dimensions	Width (with Feeding and Length Folding) mm (in)			2575 (101-16/16")	
	Depth (wit Feeding and Length Folding) mm (in)			1280 (50)	
	Height (with Feeding and Length Folding) mm (in)			1460 (57)	
Speed range m/min (ft/min)		0.5 to 5.5 (2' to 18')	0.5 to 5.5 (2' to 18')	1.5 to 9 (5' to 30')	
Heating alternatives					
Electric	nickel-plated steel cylinder	○○	○○	●	
	stainless steel cylinder	●	●	-	
	stainless steel cylinder & air circulation device	-	-	●	
	Dubixium cylinder	-	-	○○	
Gas	nickel-plated steel cylinder	○○	○○	●	
	stainless steel cylinder	●	●	-	
	Dubixium cylinder	-	-	○○	
	stainless steel cylinder	-	-	●	
Functional features					
Front delivery, no folding		● (1)	● (1)	●	
--R : Rear delivery only, no folding		-	-	○○	
LF : Length Folding, front delivery only		-	-	○○	
F-R : automatic Feeding, Rear delovery only (no folding)		-	-	○○	
FLF : Feeding, front delivery with or without Length folding		-	-	○○	
FFL : automatic Feeding, cross Folding and Length, side delivery		-	-	○○	
FFS : automatic Feeding, length and cross Folding, Stacking		-	-	○○	
Vacuum table		-	-	○○	
Antistatic		-	-	○○	
Third arm folder. Assistance for manual folding		○○	○○	-	
DIAMMS™ speed management system		○○	○○	●	
Nomex® ironing belts		●	●	●	
Special voltages		○○	○○	○○	

Dimensions depend on the option selected, please read the product data for more information (1) manual folding assistance available as option

More options available. For details, please contact us at www.electrolux.com/laundrysystems



Bed-type ironer, multi-roll ironer Standard product		C.FLEX 930.1	C.FLEX 1230.1
Dimensions	Roll diameter mm / in	900 / 35-7/16"	1200 / 47-4/16"
	Ironing width mm / in	3000 / 118-2/16"	3000 / 118-2/16"
	width x depth x height (1 roll) [mm]	4200x1995x1560	4200x2320x1760
	width x depth x height (2 rolls) [mm]	4200x3325x1560	4200x3995x1760
	width x depth x height (3 rolls) [mm]	4200x4665x1560	4200x5565x1760
	width x depth x height (1 roll) [in]	165-6/16" x 78-9/16" x 61-7/16"	165-6/16" x 91-5/16" x 69-5/16"
	width x depth x height (2 rolls) [in]	165-6/16" x 130-14/16" x 61-7/16"	165-6/16" x 157-5/16" x 69-5/16"
	width x depth x height (3 rolls) [in]	165-6/16" x 183-11/16" x 61-7/16"	165-6/16" x 219-2/16" x 69-5/16"
	Speed range (1 roll) [m/min] / [ft/min]	5 to 15 / 16' to 49'	8 to 24 / 26' to 79'
Speed range (2 rolls) [m/min] / [ft/min]	9 to 27 / 29' to 89'	14 to 42 / 46' to 138'	
Speed range (3 rolls) [m/min] / [ft/min]	14 to 42 / 46' to 138'	14 to 42 / 46' to 138'	
Heating alternatives			
Steam		●	●
Steam low pressure (5 to 8 bar, specify upon order)		○○	○○
Thermal oil		●	●
Functional features			
Rear delivery		●	●
Voltage 400-415 / 50-60Hz / 3		●	●
Aluminised Spring-Press® spring padding		●	●
Two layer Polyester roll padding		●	●
Automatic cleaning of inverter's ventilation screen		●	●
Variable speed control within the speed range		●	●
Accessories			
Steam traps & filters		●	●
Walkable top cover		●	●



	IC44821	IC44825	IC44828	IC44832	IC44819 FFS	IC44825FFS	IC44832FFS
	479 (18-14/16")	479 (18-14/16")	479 (18-14/16")	479 (18-14/16")	479 (18-14/16")	479 (19")	479 (19")
	2540 (100-6/16")	2540 (100-6/16)	2750 (108-4/16")	3170 (124-13/16")	1910 (75")	2540 (100")	3170 (125")
	3205 (126-3/16")	3205 (126-3/16")	3415 (134-7/16")	3835 (151)	3810 (150)	4410 (173-10/16")	4910 (193-5/16")
	1070 (40-6/16")	1070 (40-6/16")	1070 (40-6/16")	1070 (40-6/16")	1730 (68-2/16")	1730 (68-15/16")	1730 (68-15/16")
	1270 (50)	1270 (50)	1270 (50)	1270 (50)	1675 (65-15/16")	1675 (65-15/16")	1675 (65-15/16")
	2785 (109-10/16")	3205 (126-3/16")	3415 (134-7/16")	3835 (151)			
	1280 (50)	1280 (50)	1280(50)	1280 (50)			
	1460 (57)	1460 (57)	1460 (57)	1460 (57)			
	1.5 to 9 (5' to 30')	1.5 to 9 (5' to 30')	1.5 to 9 (5' to 30')	1.5 to 9 (5' to 30')	1,5 to 11 (5' to 36')	1,5 to 11 (5' to 36')	1,5 to 11 (5' to 36)
	●	●	●	●	-	-	-
	-	-	-	-	-	-	-
	●	●	●	●	-	-	-
	○○	○○	○○	○○	●	●	●
	●	●	●	●	-	-	-
	-	-	-	-	-	-	-
	○○	○○	○○	○○	●	●	●
	●	●	●	●	●	●	●
	●	●	●	●	●	●	●
	○○	○○	○○	○○	-	-	-
	○○	○○	○○	○○	-	-	-
	○○	○○	○○	○○	-	-	-
	○○	○○	○○	○○	-	-	-
	○○	○○	○○	○○	●	●	●
	○○	○○	○○	○○	●	●	●
	○○	○○	○○	○○	●	●	●
	○○	○○	○○	○○	●	●	●
	○○	○○	○○	○○	●	●	●
	-	-	-	-	-	-	-
	●	●	●	●	●	●	●
	●	●	●	●	●	●	●
	○○	○○	○○	○○	○○	○○	○○



	IC44821	IC44825	IC44828	IC44832	IC44819 FFS	IC44825FFS	IC44832FFS
	479 (18-14/16")	479 (18-14/16")	479 (18-14/16")	479 (18-14/16")	479 (18-14/16")	479 (19")	479 (19")
	2540 (100-6/16")	2540 (100-6/16)	2750 (108-4/16")	3170 (124-13/16")	1910 (75")	2540 (100")	3170 (125")
	3205 (126-3/16")	3205 (126-3/16")	3415 (134-7/16")	3835 (151)	3810 (150)	4410 (173-10/16")	4910 (193-5/16")
	1070 (40-6/16")	1070 (40-6/16")	1070 (40-6/16")	1070 (40-6/16")	1730 (68-2/16")	1730 (68-15/16")	1730 (68-15/16")
	1270 (50)	1270 (50)	1270 (50)	1270 (50)	1675 (65-15/16")	1675 (65-15/16")	1675 (65-15/16")
	2785 (109-10/16")	3205 (126-3/16")	3415 (134-7/16")	3835 (151)			
	1280 (50)	1280 (50)	1280(50)	1280 (50)			
	1460 (57)	1460 (57)	1460 (57)	1460 (57)			
	1.5 to 9 (5' to 30')	1.5 to 9 (5' to 30')	1.5 to 9 (5' to 30')	1.5 to 9 (5' to 30')	1,5 to 11 (5' to 36')	1,5 to 11 (5' to 36')	1,5 to 11 (5' to 36)
	●	●	●	●	-	-	-
	-	-	-	-	-	-	-
	●	●	●	●	-	-	-
	○○	○○	○○	○○	●	●	●
	●	●	●	●	-	-	-
	-	-	-	-	-	-	-
	○○	○○	○○	○○	●	●	●
	●	●	●	●	●	●	●
	●	●	●	●	●	●	●
	○○	○○	○○	○○	-	-	-
	○○	○○	○○	○○	-	-	-
	○○	○○	○○	○○	-	-	-
	○○	○○	○○	○○	-	-	-
	○○	○○	○○	○○	●	●	●
	○○	○○	○○	○○	●	●	●
	○○	○○	○○	○○	●	●	●
	○○	○○	○○	○○	●	●	●
	○○	○○	○○	○○	●	●	●
	○○	○○	○○	○○	●	●	●
	-	-	-	-	-	-	-
	●	●	●	●	●	●	●
	●	●	●	●	●	●	●
	○○	○○	○○	○○	○○	○○	○○

Share more of our thinking at
www.electrolux.com

Environment

Being environmentally friendly is more than just a concern to us.

It means being truly conscious and totally committed to environmental issues at every stage of the industrial cycle, from design to manufacturing. The ISO 14001 certification guarantees our long-term commitment.