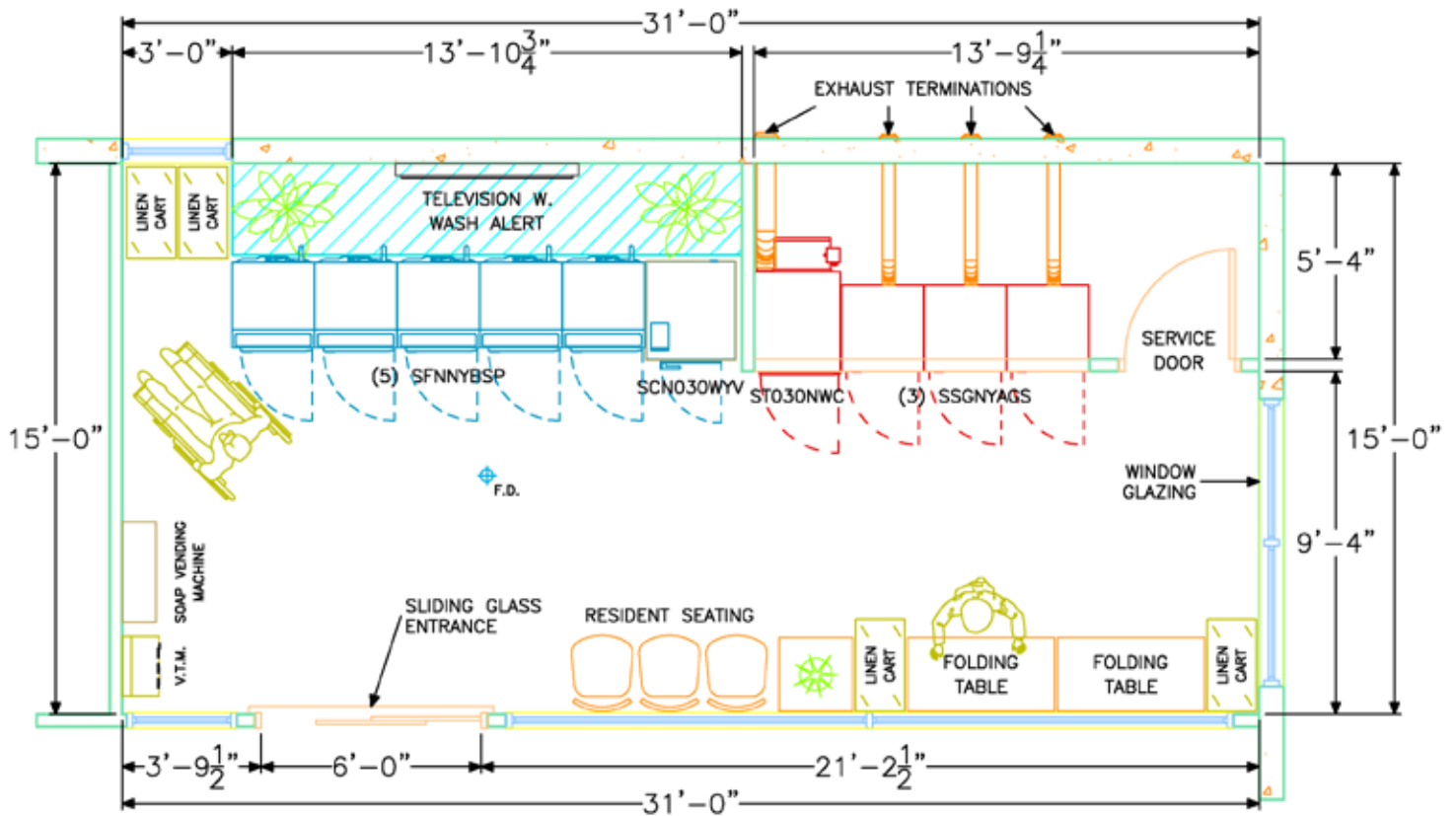




LAUNDRY DESIGN SERVICES



PRELIMINARY DRAWING



	100 UNIT APARTMENT	PROJECT NO. C16*****	AREA 465	DRAWN BY KRP	DATE 16-May-16	
---	---------------------------	--------------------------------	--------------------	------------------------	--------------------------	---

Equipment specifications are subject to change without notice. Please use this drawing along with the installation manuals for updated equipment installation requirements.

Envisioning the design

Do you have a general idea of what you would like your laundry facility to look like? Your local laundry service provider is available to help you get all of your ideas down on paper and fill in the details. Together, you'll go over room dimensions, window and door locations, accessory options, incoming utility line locations, and equipment mix. The quick sketch and rough notes produced during this initial meeting can be turned into a professional and polished Preliminary Drawing that allows you to envision the final outcome.

What's included

- General layout and placement of equipment
- Service areas and requirements
- Seating and lounge areas
- Vending machines
- Soap dispensers and bill changers
- Folding areas
- Restrooms
- Window and door locations

UTILITY SCHEDULE



LAUNDRY EQUIPMENT LIST				
ITEM	MANUFACTURER	MODEL	DESCRIPTION	QTY. FUTURE
1	SPEED QUEEN	SCN030WYV	WASHER-EXTRACTOR	1
2	SPEED QUEEN	SFNNYBSP	FRONTLOAD WASHER	5
3	SPEED QUEEN	SSGNYAGS	STACK DRYER	3
4	SPEED QUEEN	STO30NWC	TUMBLER	1

DRAIN OUTLET SIZE		
MODEL	MACHINE DRAIN OUTLET	RECOMMENDED MIN. DRAIN LINE FOR EACH BULKHEAD
SCN030WYV	2"	4"
SFNNYBSP	1 1/2"	

DRAIN MUST BE VENTED. CONSULT PLUMBING CODES FOR LOCAL REQUIREMENTS.

DYNAMIC LOAD SPECIFICATIONS				
MODEL	STATIC LOAD, LBS/SF	DYNAMIC LOAD, LBS/SF	MAXIMUM DYNAMIC LOAD, LBS/SF	DYNAMIC LOAD FREQUENCY Hz
SCN030WYV	99	109	109	12.8

*DYNAMIC LOAD FREQUENCY AT HIGHEST FACTORY-PRESET EXTRACT SPEED.

NOTE: PLEASE REFER TO THE EQUIPMENT INSTALLATION MANUAL FOR REQUIRED FLOOR & PAD THICKNESS ON SPECIFIC WASHER SIZES AND MODELS.

ELECTRICAL REQUIREMENTS				
MODEL	VOLTAGE	FULL LOAD AMP DRAW	CIRCUIT BREAKER	WIRE SIZE
SCN030WYV	110-120/60/1ø	16A	20A	AWG12
SFNNYBSP	110-120/60/1ø	9.8A	15A	AWG14
SSGNYAGS	110-120/60/1ø	8A	15A	AWG14
STO30NWC	110-120/60/1ø	12A	15A	AWG14
TOTALS		101.0A		

ALL MACHINES MUST BE GROUNDED. PROVIDE GROUND SOURCE IN ACCORDANCE WITH CODES.

CONSULT ELECTRICAL CODE FOR LOCAL REQUIREMENTS. USE ONLY 3 POLE CIRCUIT BREAKERS FOR 3ø SERVICE. PLEASE REFER TO THE MANUFACTURER'S INSTALLATION MANUAL FOR EXACT BREAKER SPECIFICATIONS.

FOR SAFETY PURPOSES, CLEARLY MARKED & EASILY ACCESSIBLE POWER CUTOFF SWITCHES CAN BE PROVIDED FOR EACH MACHINE.

GAS INLET SIZE					
MODEL	OPERATING PRESSURE (PSI)	GAS TYPE	HWK INPUT BTU/HOUR	CONNECTION SIZE	RECOMMENDED SUPPLY LINE
SSGNYAGS	7"±1.5"	NATURAL	50000	1/2"	1 1/4"
STO30NWC	7"±1.5"	NATURAL	73000	1/2"	
TOTAL			223000		

PROVIDE 1"(25.4mm) LOOP TO EQUALIZE GAS PRESSURE. GAS CONNECTION TO BE PERFORMED BY QUALIFIED TECHNICIAN IN ACCORDANCE WITH LOCAL CODES.

NOTE: THE RECOMMENDED GAS LINE IS SIZED FOR THE DRYERS ONLY. ALL OTHER ITEMS IN THE LAUNDRY THAT REQUIRE GAS ARE NOT INCLUDED.

EXHAUST/VENT OUTLET SIZE			
MODEL	SIZE	AIR FLOW	MIN. CROSS SECT. AREA ALL MACHINES
SSGNYAGS	4"	440 cfm	3x16 sq in
STO30NWC	6"	500 cfm	1x35 sq in

PROVIDE AT LEAST 2.4 SQ FT OPEN AREA FOR ALL DRYER MAKE-UP AIR SUPPLY.

THIS FIGURE DOES NOT INCLUDE MAKE-UP AIR PROVISIONS FOR FINISHERS IF APPLICABLE.

WATER INLET SUPPLY													
MODEL	COLD WATER			HOT WATER			AVERAGE HOT WATER USAGE IN GALLONS/CYCLE	MAXIMUM VALVE FLOW GALLONS/MINUTE		REQUIRED LINE SIZE TO SUPPLY MACHINE		RECOMMENDED LINE SIZE TO SUPPLY ALL MACHINES	
	CONNECTION SIZE	MIN. PRESSURE	MAX. PRESSURE	CONNECTION SIZE	MIN. PRESSURE	MAX. PRESSURE		COLD	HOT	COLD	HOT	COLD	HOT
SCN030WYV	3/4NH	30lbs	85lbs	3/4NH	30lbs	85lbs	6.5	10.4	10.4	3/4"	3/4"	1"	1"
SFNNYBSP	3/4NH	20lbs	120lbs	3/4NH	20lbs	120lbs	1.59	2.5	2.5	1/2"	1/2"	1"	1"

NOTE: THE "AVERAGE HOT WATER USED PER CYCLE" FIGURES SHOWN IN THE UTILITY SCHEDULE ARE FOR EACH MACHINE OF THAT CAPACITY AND NOT FOR THE TOTAL NUMBER OF MACHINES. FOR TESTING, AN AVERAGE WATER PRESSURE OF 60 PSI WAS USED TO DETERMINE THE WATER USAGE FIGURES.

NOTE: ALL HOT WATER USAGE FIGURES ARE ESTIMATES. ACTUAL WATER CONSUMPTIONS WILL VARY DEPENDING ON LOCAL WATER PRESSURES, EQUIPMENT CONDITION, NUMBER OF CYCLES AND CYCLE TIMES SELECTED, LOAD SIZES AND THE TYPE OF MATERIALS PROCESSED.

NOTE: WATER CONSUMPTION AND WATER USAGE INFORMATION SHOWN IN THIS UTILITY SCHEDULE ARE ONLY FOR THE WASHING MACHINES. OTHER ITEMS LOCATED WITHIN THE LAUNDRY SUCH AS WATER HEATERS ARE NOT INCLUDED.



100 UNIT APARTMENT

PROJECT NO.	AREA	DRAWN BY	DATE
C16****	465	KRP	16-May-16



NOT FOR CONSTRUCTION PURPOSES. Equipment specifications are subject to change without notice. Please see equipment installation manuals for updated equipment installation requirements.

Planning for the future

Once your mix of equipment has been determined, it is recommended a Utility Schedule be created. This powerful tool allows you to see at a glance the requirements needed for electrical, drain, gas, exhaust/venting, water and more. It will be extremely useful when discussing installation with your general contractor.

Allow us to help you preplan your equipment installation more efficiently.

What's included

- Equipment listing
- Drain outlet size(s)
- Gas pressure, input and connection size
- Voltage listing
- Full load amp drawing and circuit breaker size
- Dynamic load specifications
- Exhaust vent size
- Make-up air requirements
- Hot and cold water inlet size(s) and pressure(s)
- Hot and cold water valve flow

100 UNIT APARTMENT



PROJECT NO.
C16****

AREA
485

DRAWN BY
KRP

DATE
16-May-16

CONTACT INFO
Alliance Laundry Systems
PH: 820-748-3121
FX: 820-748-1002



Speed Queen

Equipment specifications are subject to change without notice. Please call for pricing. Pricing will be provided through the equipment installation requirements.

SHEET 2 OF 4




36"

14 1/2"

10"

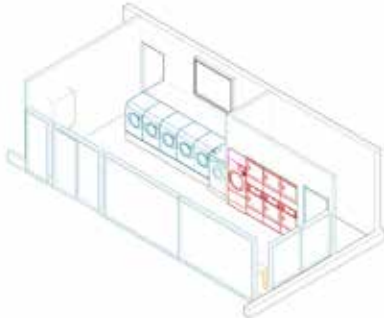
50 1/2"

Speed Queen.




LAUNDRY EQUIPMENT LIST			
NO.	DESCRIPTION	QTY	REMARKS
1	WASHER	1	100 UNIT APARTMENT
2	DRYER	1	100 UNIT APARTMENT
3	WASHER	1	100 UNIT APARTMENT
4	DRYER	1	100 UNIT APARTMENT

SHEET LISTING	
NO.	DESCRIPTION
1	WASHER
2	DRYER
3	WASHER
4	DRYER




RIGHT FRONT 3D VIEW




LEFT FRONT 3D VIEW

Speed Queen.




LAUNDRY EQUIPMENT LIST			
NO.	DESCRIPTION	QTY	REMARKS
1	WASHER	1	100 UNIT APARTMENT
2	DRYER	1	100 UNIT APARTMENT
3	WASHER	1	100 UNIT APARTMENT
4	DRYER	1	100 UNIT APARTMENT

SHEET LISTING	
NO.	DESCRIPTION
1	WASHER
2	DRYER
3	WASHER
4	DRYER



RIGHT FRONT 3D VIEW



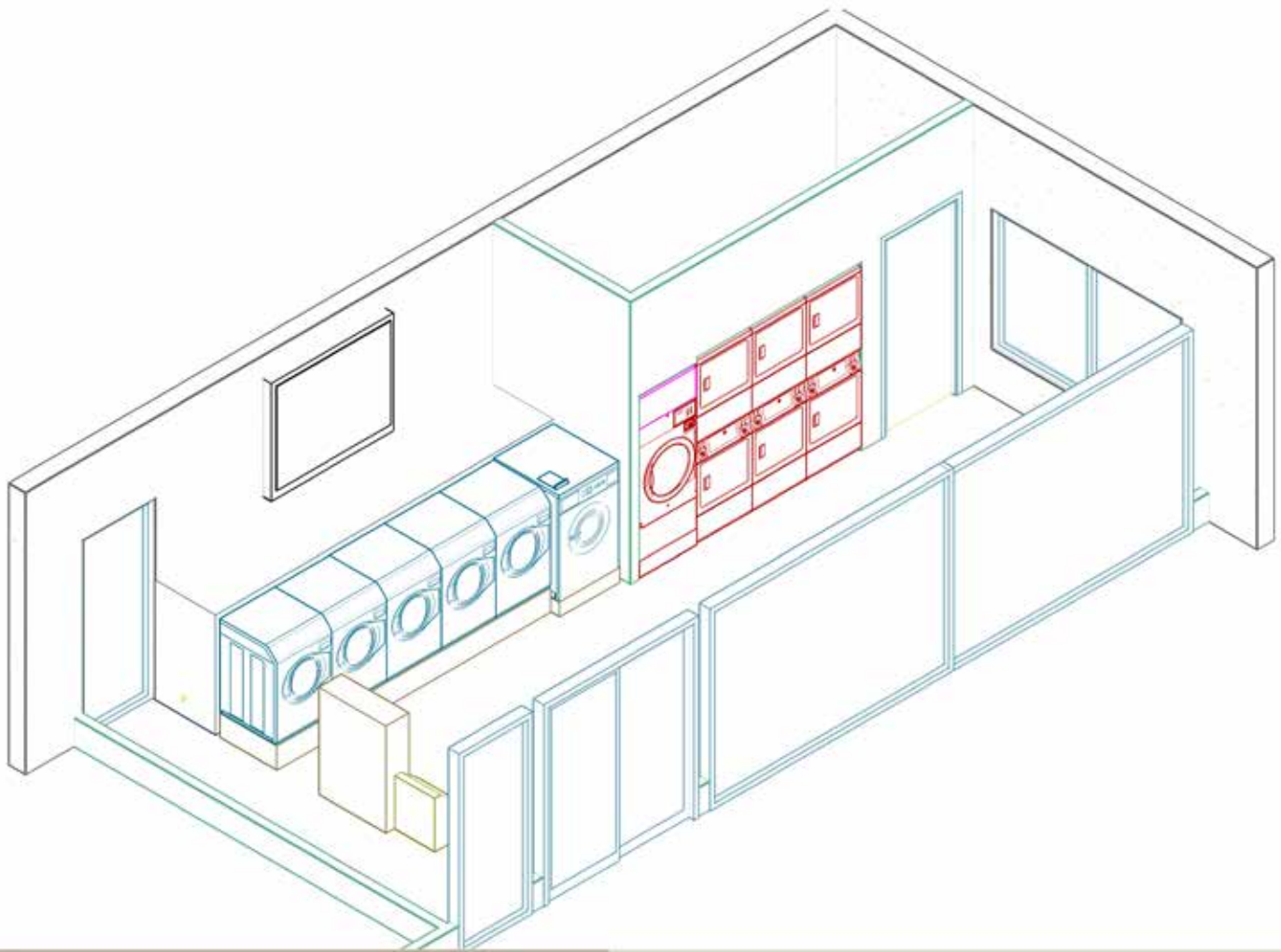
LEFT FRONT 3D VIEW

What's included

Technical drawings can be provided for any project after a preliminary drawing has been designed and approved for completion. These drawings will always be provided to you in .PDF format, but are also available in .DWG and .DXF AutoCad formats. If you would like paper copies of the drawings, we will print out 24 inch x 36 inch (610mmx 914mm) sheets folded and mailed to whatever location you specify.

Typical technical drawings come in 3 to 4 pages per set.

3D VIEW



	100 UNIT APARTMENT	PROJECT NO.	AREA	DRAWN BY	DATE
		C16*****	465	KRP	16-May-16

Equipment specifications are subject to change without notice. Please use this drawing along with the installation manuals for updated equipment installation requirements.

**Speed Queen.**

From another perspective

Visualize your facility taking shape before construction has even started with our 3D View drawing. The 3D View's representation of height, width, and depth provides a better vision of your finished laundry.

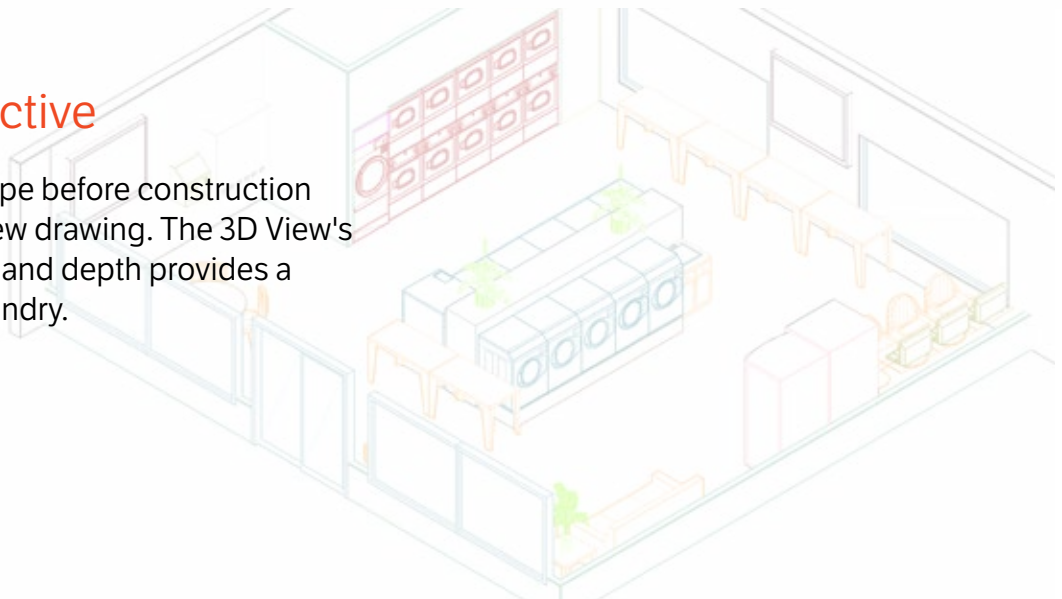


PHOTO REALISTIC RENDERINGS



See your laundry come to life

See your laundry facility come to life with our Photo Realistic Renderings! These images, completely customizable, showcase your laundry facility in a whole new light.

The photo realistic rendering package takes the 3D view of your laundry to the next level by providing realistic, detailed images of how your laundry facility can look. Customize such features as flooring, furniture, color schemes, and accessories to help envision your completed laundry facility.

What's included

Your photo realistic renderings will be provided in a portfolio style .PDF format but can also be provided in .JPG and .PNG file formats. The number of images provided will be dependent on the size and flow of the space of your laundry facility.

Photo realistic renderings can be provided for any project after a preliminary drawing has been designed and approved for completion. When requesting renderings, please allow for 3-5 business days from approval for completion of rendering set.



Alliance Laundry Systems
Attn: Laundry Design Service
Phone: 920.748.4273
Fax: 920.748.1662
Email: laundrydesign@alliancels.com